

GS2

Eccentric Gear Straightside Servo Presses

3150 - 8000 kN Capacity

355 - 900 US Tons Capacity



Product Overview

With capacity ranging from 3150-8000 kN (355-900 US tons), the Minster Global Servo Press (GS2) Series offers proven servo technology, performance, and flexibility.

The GS2 was designed in collaboration with Nidec Press & Automation's global technology resources, which represents nearly 400 years of combined metal forming experience.

Assembled at Nidec Minster's world headquarters in Minster, Ohio, the GS2 is built with the same rugged characteristics, combined with the performance and technology that Minster customers have come to know.

With an aggressive stock program and global manufacturing synergies within Nidec Press & Automation, Nidec Minster is able to offer GS2 presses with competitive pricing and short term delivery anywhere in the world.

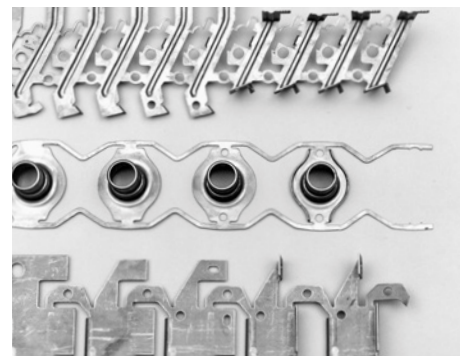
The GS2 Press Series is offered with NPA's full portfolio of automation and control solutions allowing for complete integrated pressroom systems from a single source.

In addition, all Minster and NPA products are backed up with the industry's most comprehensive Customer Service network with fully-stocked Service Centers located on three continents, and service personnel dispatched from more than 90 global locations.



- 1** Precision kinematics enables quicker system response and higher production rates.
- 2** Eccentric wheels with double helical gearing for smooth operation, increased power transmission and higher durability.





3 Desch Planetary Gearbox reduces the drive train inertia for quicker acceleration and faster stopping times.

4 Minster proven Robust Design insures years of trouble free operation and lowest overall cost of ownership.

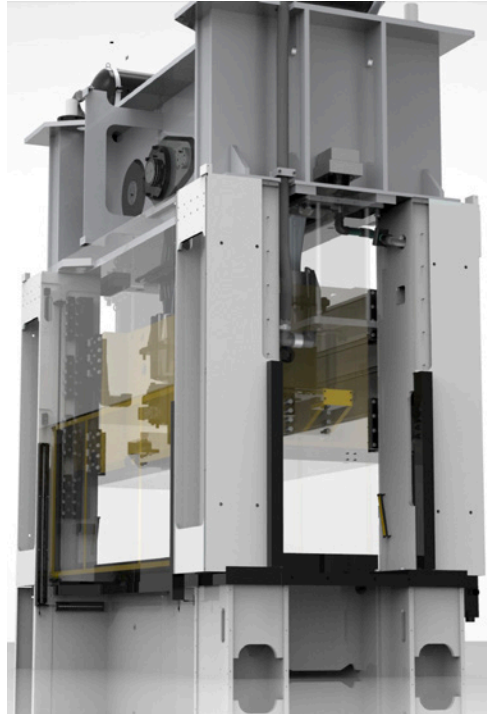
5 Siemens full energy management system provides maximum energy efficiency and lowest power cost per part.

6 Zero clearance slide guiding improves die set up and operation.

Standard Features

Minster Robust Design

- Heavy duty steel frame
- Maximum rigidity insuring consistent bottom-dead-center (BDC) repeatability
- All components are thoroughly analyzed

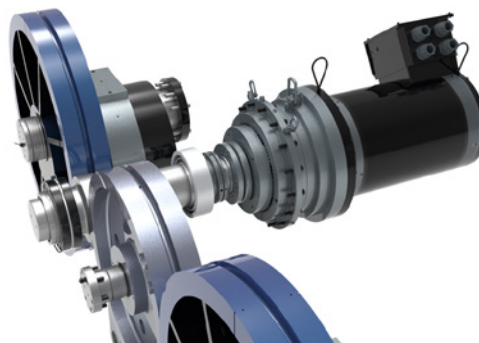


Low Inertia Drive Train

- Integrated assembly to obtain maximum performance
- Low friction bearings
- Double reduction planetary and pinion gearing
- Space saving, low inertia design (for minimum space)

Eccentric Gear Transmission

- Precision kinematic drive train
- Superior response results in higher performance
- Load is centralized directly through the most rigid part of the drive train
- Compact design insures minimal deflection and superior response

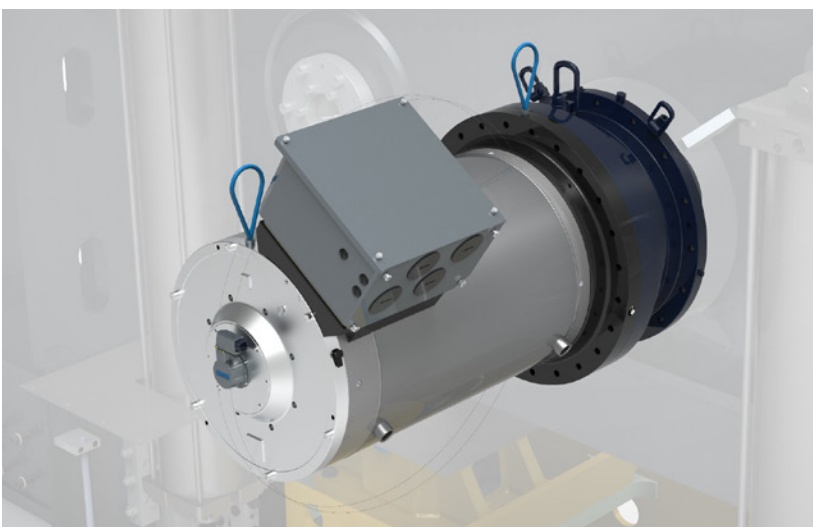


Desch Reduction Planetary Gearbox

- Low inertia, high performance
- Maintenance free wet brake

Double Helical Gear

- No axial force
- Smoother running, more power transmission with less noise
- Increased durability due to lower losses and friction wear
- Tighter tolerance resulting in precise kinematic drive train
- Recommended for use with high gear speed



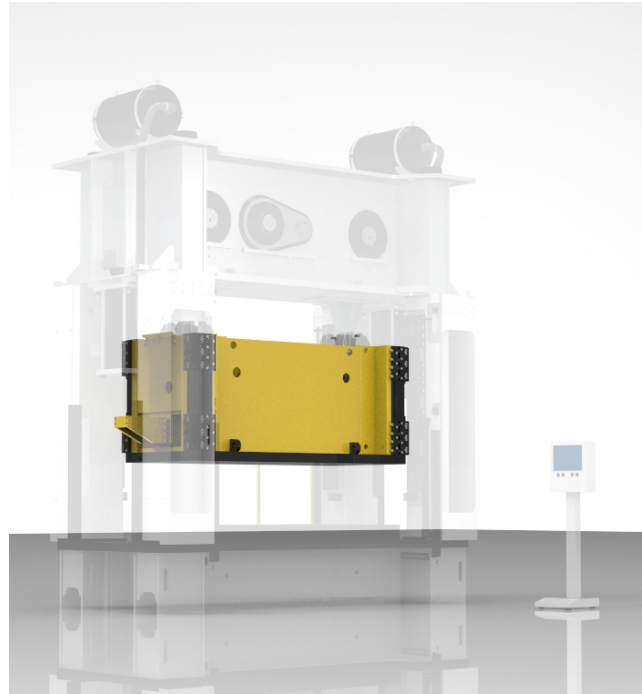
Siemens Servo Motor Technology

- State-of-the-art technology
- Flexible and programable profiles
- Low inertia
- Full energy management
- Low demand on the electric power grid
- Water cooled motor for higher performance

Standard Features

Slide Guiding System

- Zero clearance slide guiding system
- Linear roller guides provide full stroke slide guiding accuracy
- Precision eight-point slide guiding
- Easy maintenance



Additional Standard Features

- Recirculating oil lubrication
- Electronic tool storage
- Hydraulic overload
- Fixed bolster
- 16 pole programmable limit switch
- Automatic counterbalance control
- Electronic shutheight control
- Powered die doors (front & rear)
- Front light curtains
- Component Temperature Monitoring
- Feed and Transfer Mounting Pads – RH & LH end
- Maintenance platform in the crown

Optional Features

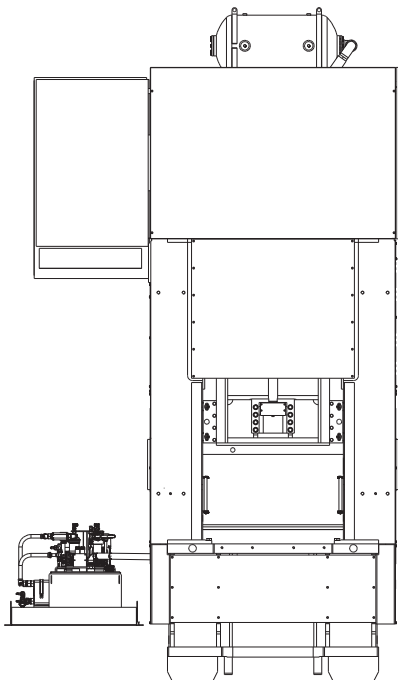
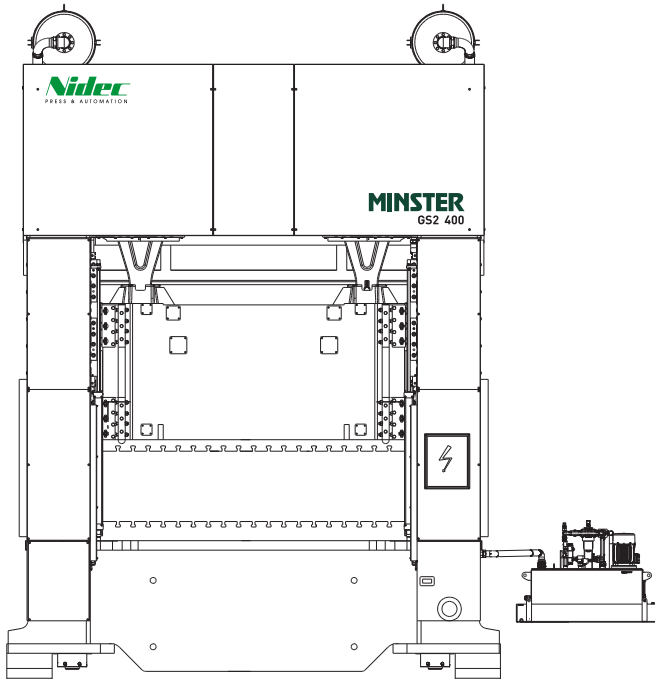
Features

- Press isolation mounts
- 4 channel tonnage monitor + HOL Adj Valve
- 16 point die protection
- Automatic shutheight adjustment
- Die area lights
- Integration with industry partners



GS2-315 SERIES

Specifications & Dimensions



SPECIFICATIONS

Capacity	3150 kN 355 US tons
----------	------------------------

FRAME SPECIFICATIONS

Bed & Slide, R-L	2550 mm 100 in	3050 mm 120 in
Bed & Slide, F-B	1200 mm 47 in	
Shutheight on Bolster (SDAU)	600 - 650 - 700 mm 23.6 - 25.6 - 27.6 in	
Bolster Thickness	190 mm 7.5 in	
Side Window Opening, F-B	1200 mm 47 in	
Weight (kg / lbs)	53,000 kg 116,845 lbs	60,000 kg 132,280 lbs

STROKE & SPEED SPECIFICATIONS

Stroke	300 mm 11.8 in
Speed Continuous (Max.)	71 SPM
Speed Pendulum 150 mm (5.9 in)*	90 SPM
Speed Pendulum 125 mm (4.9 in)*	100 SPM
Speed Pendulum 100 mm (3.9 in)*	110 SPM
Speed Pendulum 80 mm (3.1 in)*	115 SPM
Slide Adjustment	200 mm 7.8 in
Max Upper Die Weight	3,000 kg 6,615 lbs

CONTROL SPECIFICATIONS

Servo Motor and Drive Platform	Siemens
Energy Management System	Full
Servo Power Infeed	80 kW 107 HP
Energy (@40 SPM)	65 kJ 287 In-Tons

* Stroke rate depends on profile of stroke and press mechanical properties.

GS2-400 SERIES

4000 kN 450 US tons	
3050 mm 120 in	3650 mm 143 in
1400 mm 55 in	
650 - 700 - 750 mm 25.6 - 27.6 - 29.5 in	
190 mm 7.5 in	
1400 mm 55 in	
82,000 kg 180,780 lbs	93,000 kg 204,600 lbs
350 mm 13.8 in	
53 SPM	
90 SPM	
95 SPM	
105 SPM	
110 SPM	
250 mm 9.8 in	
6,000 kg 13,200 lbs	
Siemens	
Full	
120 kW 160 HP	
120 kJ 530 In-Tons	

GS2-630 SERIES

6300 kN 710 US tons		
3050 mm 120 in	3650 mm 143 in	4250 mm 167 in
1500 mm 59 in		
750 - 800 - 850 mm 29.5 - 31.5 - 33.5 in		
190 mm 7.5 in		
1500 mm 59 in		
106,000 kg 233,700 lbs	125,000 kg 275,578 lbs	145,000 kg 319,670 lbs
400 mm 15.7 in		
55 SPM		
85 SPM		
90 SPM		
100 SPM		
105 SPM		
300 mm 11.8 in		
7,000 kg 15,430 lbs		
Siemens		
Full		
160 kW 215 HP		
110 kJ 486 In-Tons		

GS2-800 SERIES

8000 kN 900 US tons		
3650 mm 143 in	4250 mm 167 in	4850 mm 191 in
1800 mm 71 in		
800 - 850 - 900 mm 31.5 - 33.5 - 35.4 in		
235 mm 9.3 in		
1800 mm 71 in		
TBD	TBD	TBD
450 mm 17.7 in		
45 SPM		
75 SPM		
80 SPM		
90 SPM		
95 SPM		
300 mm 11.8 in		
10,000 kg 22,045 lbs		
Siemens		
Full		
235 kW 315 HP		
210 kJ 928 In-Tons		



One Brand: A World of Resources

Nidec Press & Automation is the full service pressroom provider of choice for businesses in more than 90 countries and on six continents. Comprised of leading press room product brands, we ensure a complete offering of machinery, services and technology to meet your exact needs, enabling you to rely on one source.

Discover the freedom to achieve, to maximize and to drive your operation to exceed your goals. At Nidec Press & Automation, your success is the core of our focus and how we design our solutions to meet the rigid needs of the metal forming industry.

Choosing to work with us means you gain a constant resource with a global footprint, the brightest minds behind our solutions, and backed by regionally based OEM support ready to work as a natural extension of your team.

**Our promise to you is simple:
We're with you whenever and wherever
business takes you.**



MACHINERY

- Turn Key Systems
- Individual Components
- System/Tech Upgrades
- i4.0 Software Upgrades
- Integrated Controls

METAL FORMING PRESS APPLICATIONS

- Mechanical
- Servo
- Transfer
- High-Speed & Electrical
- Electrical Vehicle (EV)
- Lamination
- Container Cupping
- Container End-Conversion
- Container Shell
- Gap/D-Frame

AUTOMATION

- Press Tending / Robotics
- Integrated Transfers
- High Speed Servo Feeds
- High Speed Gripper Feeds
- Heavy-Duty Coil Lines

GLOBAL SERVICE NETWORK

- Field Service
- Emergency Response
- Technical Service & Support
- OEM Replacement Parts
- Machine & Component Remanufacturing
- Technical Training



One Brand: A World of Resources

A single source solution that will help you find the efficiencies you want — all from the products, services and technology of Nidec Press & Automation.

nidecpa.com